

Graphelyte® Graphene of high specific surface area

Graphelyte® is graphene powder of high specific surface area and very high bulk density.

Application areas: Biomedical, printable electronics(electrodes,heat dissipation,electronic storage etc),additives for resins and metals etc.



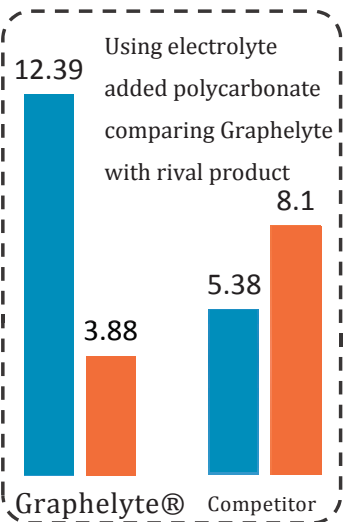
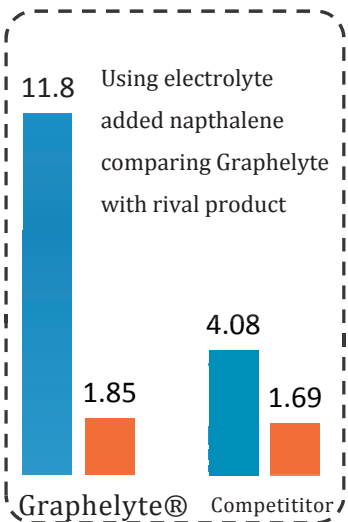
Left side bottle is Graphelyte®900:

Bulk density is 4 gram/litre.

Right side bottle is high density graphite:

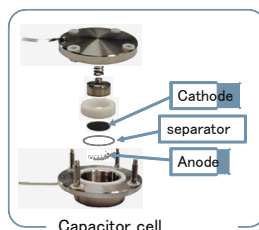
Bulk density is 200 gram/litre.

Product data(Graphelyte®)	
BET surface area	440~850m ² /g
Bulk density	4~8Lg/L
C(%)	80~86%
H(%)	0~1%
O(%)	14~22%
S(%)	0%
N(%)	0%

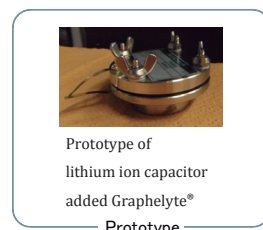


■ Electrostatic capacity [F]
 ■ Internal resistance[Ω]

Capacitors and Batteries



Capacitor cell

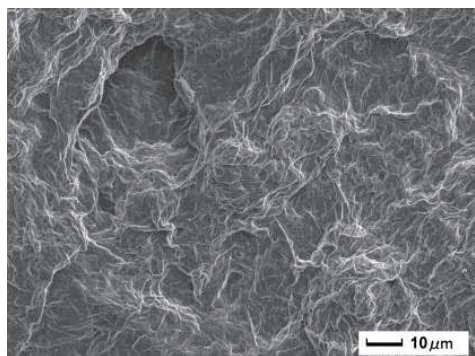


Prototype of lithium ion capacitor added Graphelyte®
 Prototype

(Source of reference:Shibaura Institute of Technology, Engineering faculty of electrical engineering)

Graphelyte®has high specific surface area with electric conductivity. It has high potential of improving the performance of lithium ion capacitor and so on.

According to the test above,Graphelyte®has verified that it can be applicable for capacitor with excellent results.



Microscope picture of Graphelyte® doped metal ink

Graphelyte® is manufactured in Japan at our factory.



Reactor



Microwave sintering furnace